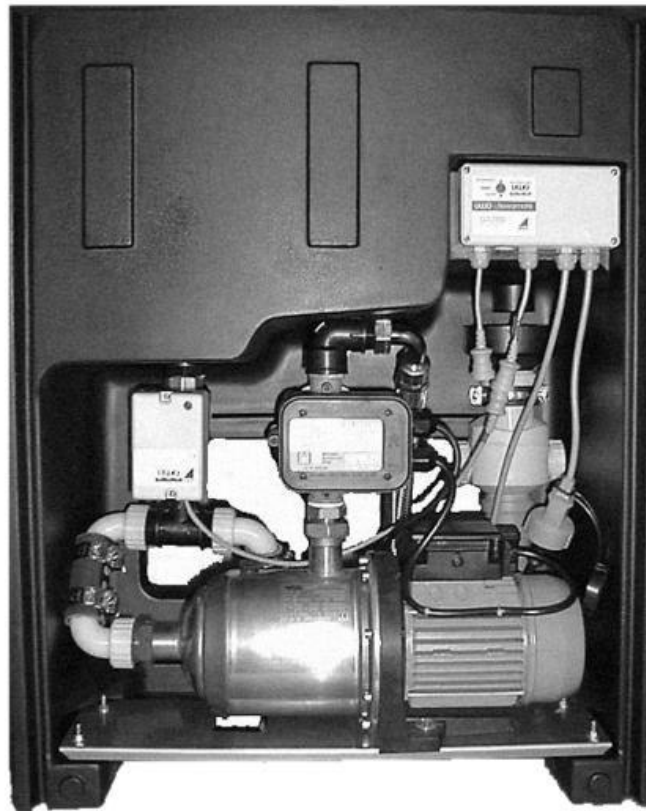


# UWO - Rainwater Management Unit

## Combimat I & II

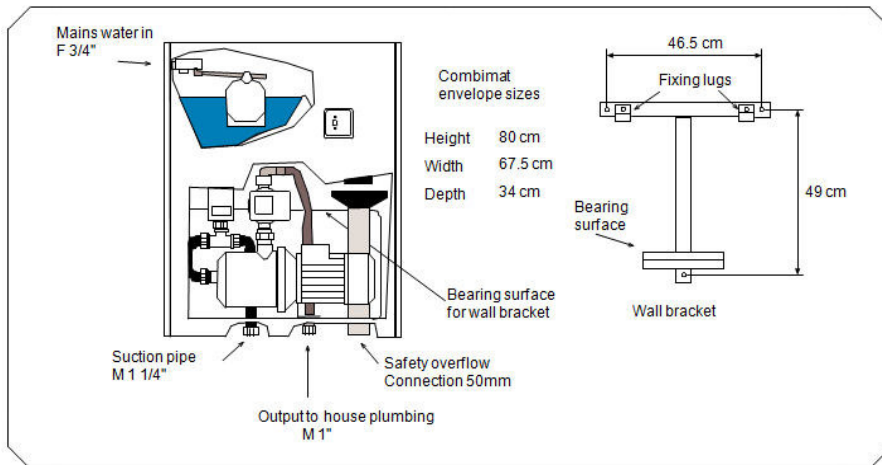


- wall mounted pumping unit with mains water automatic feeding system
- fully enclosed compact unit
- easy one man installation with wall bracket
- noise insulated enclosure
- economical automatic mains water feed providing only the required amount of water, with no wastage and low energy consumption
- suction pipe and safety overflow are secured against back pressure



# UWO - Rainwater Management Unit

## Combimat I & II



Vibration absorbing pump mounting. Intermediate tank with float valve, motorized ball tap and microprocessor control UWO-Rewamatik. Manual override to mains water operation if required. Automatic water exchange after 30 days idle. Secured against back pressure

Enhanced back pressure guard UWO-RSW for use when Combimat is below tank level

### Application Advantages

- fully enclosed for low noise
- motor runs only when water flow detected minimising power use
- easy installation via wall bracket
- all water contact parts are corrosion-resistant
- high working reliability to DIN 1988
- replaceable EU manufactured components
- switchable to manual operation if required
- fully protected unit with emergency overflow connection

### UWO - Combimat

Household supply unit for rainwater utilization in non-potable applications

### Application

Control unit for increasing rainwater line pressure with automatic mains water back-up for one or multiple family households

UWO-Combimat I	1-2 family household
UWO-Combimat II	2-4 family household

### Technical Facts

Transportation of clear water without solid materials suitable for rain, cooling or chilled water

performance of WILO-Pump:

operating voltage	1 ~ 230 V, 50 Hz
suction height	8 m
medium temperature	max. 50° C
motor protection holder	integrated

#### Combimat I

##### WILO MultiCargo FMC 304 EM

delivered flow	max. 3.5 m <sup>3</sup> /h
difference in nominal height	max. 36 m
pressure	max. 4.3 bar
motor power	550 W

#### Combimat II

##### WILO MultiCargo FMC 305 EM

delivered flow	max. 4.5 m <sup>3</sup> /h
difference in nominal height	max. 44 m
pressure	max. 5.2 bar
motor power	700 W

feeding quantity (at 4.5 bar)

Combimat I/II	60 L/min
---------------	----------

### Connection Parts

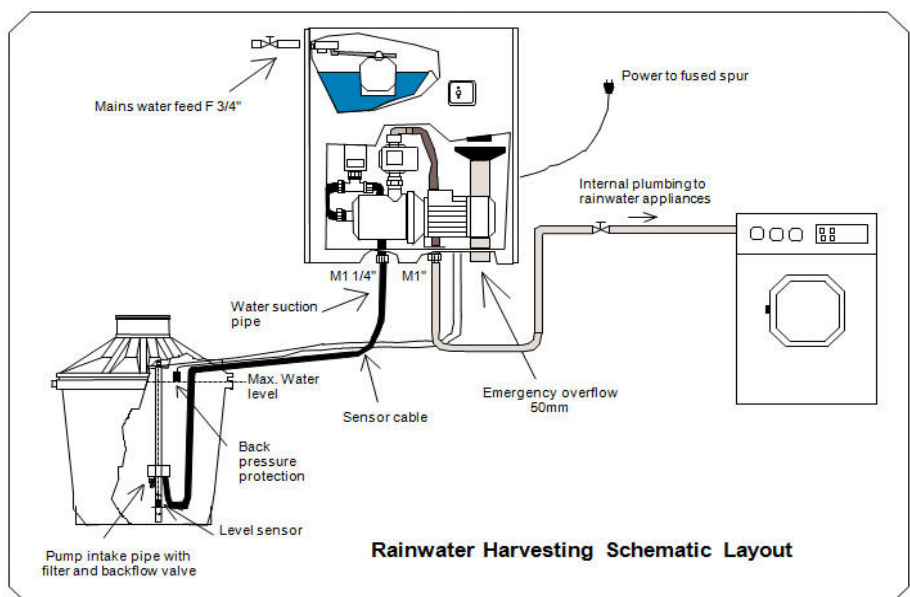
mains water connection	Combimat I/II	F 3/4"
suction side/tank extraction		M 1 1/4"
pressure side/internal plumbing		M 1"
emergency overflow		50mm
holding tank volume		15L
weight:		
Combimat I		30 Kg
Combimat II		31.5 Kg

### Functional Description

Single compact pump management unit with insulated cover for fully automatic rainwater distribution usually from an underground storage tank with mains water back-up (DIN 1988) in case of empty rainwater tank during periods of low rain. Automatic suction, corrosion-resistant, variable centrifugal pump with pressure and float guard (dry run protection)

### Scope of Supply

- compact supply unit including pump with float guard and intermediate tank with float valve - ready installed
- wall with fixing material
- wholesale packaging as well as installation and operating instructions



Rainwater Harvesting Schematic Layout